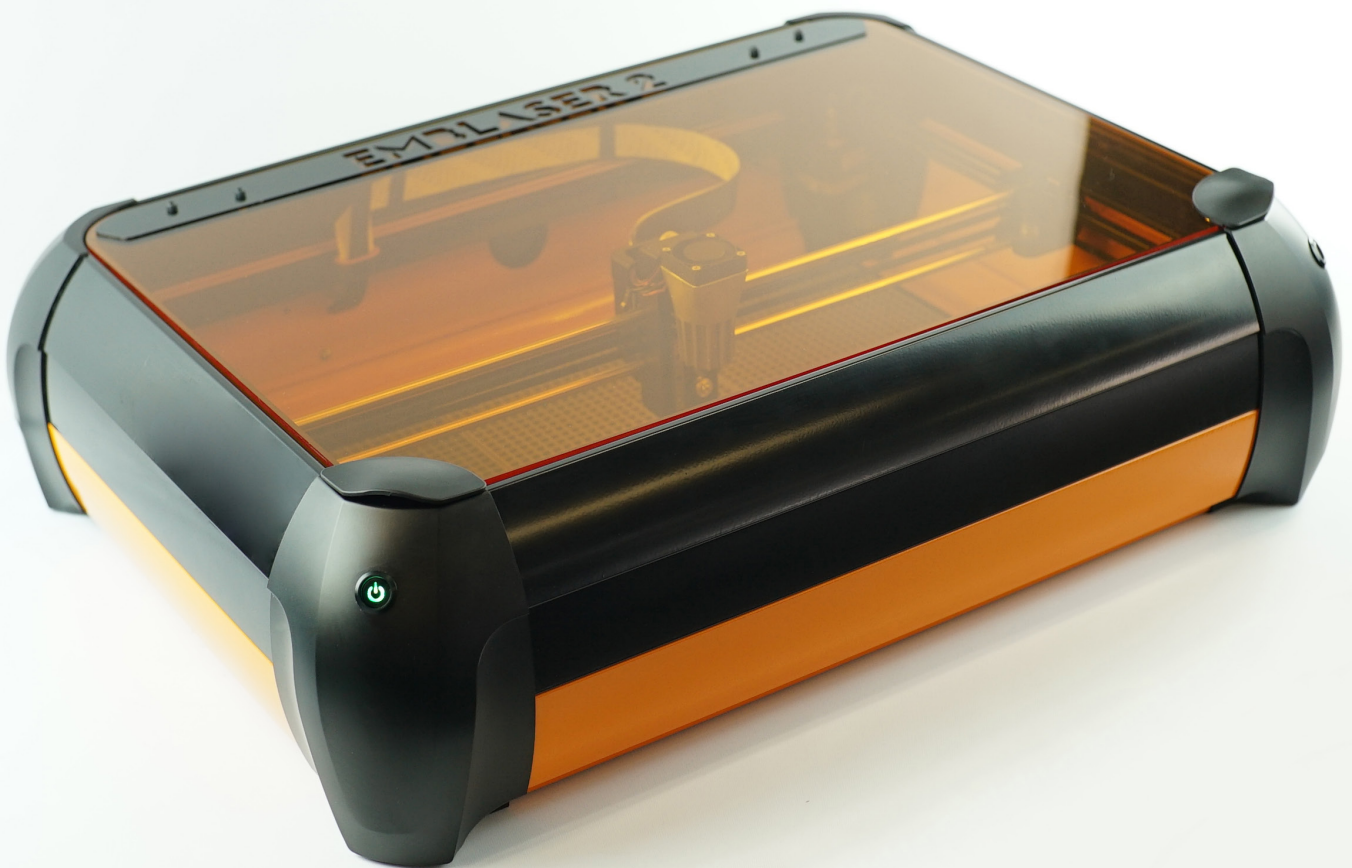




Darkly Labs®

**EMBLASER 2 SAFETY SPECIFICATION SHEET
2019**



EMBLASER 2

DESKTOP LASER CUTTER / ENGRAVER

The revolutionary desktop laser cutter and engraver from Darkly Labs.



EMBLASER 2 SAFETY SPECIFICATION SHEET 2019

SAFETY SPECIFICATIONS

ENCLOSURE

Enclosure	Aluminium, metal and polycarbonate construction V-0 fire safety rating Rated to Class1 laser product specifications	(UL94-2013REV.4:2015) IEC 60825-1
Lid	Optical-grade polycarbonate Shatterproof V-0 fire safety rating Rated to Class1 laser product specifications	(UL94-2013REV.4:2015) IEC 60825-1

ELECTRONICS

Interlock System	Integrated resistive-ID system Dual-redundancy Complies with CDRH & Machinery Safety Directive	CFR 1010 - 1050 IEC 60825-1
Low-Voltage Device	12v DC operating voltage Classified as a 'Low Voltage Device'	
Internal Safety Sensors	Integrated workspace temperature sensor for fire detection Integrated audible alarm and automatic shutdown	
AUS / NZ Electrical Safety	Compliant with all Australian and New Zealand electrical and radio safety requirements	AS/NZS 2772.2:2011 EN 301 489-1: V1.9.2 EN 301 489-17: V2.2.1 EN 62311:2008 AS/NZS 4268: 2012

OPTICS

Class 1 Laser Product	Complies with IEC directives for Class1 laser products	IEC 60825-1
CDRH Compliance	Complies with CDRH requirements for Class1 laser products	CFR 1010 - 1050

DOCUMENTATION

User Manual	Detailed User Manual covering operation and maintenance Information on safety precautions and materials Best Practices for workspace setup	
Labeling	Safety labeling as required by FDA, CDRH & CE standards	

For questions and more information, please email info@darklylabs.com.